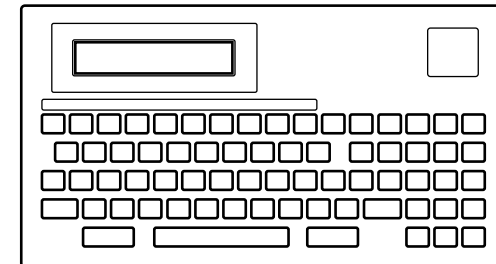


# Keyboard specifications

Dimensions	261mm W x 142mm D x 31mm H
Power	5V, 250mA
Memory	1MB Flash + 128 SRAM application memory
Interface	RS232 (Max. baud rate 19,200bps)
Keyboard	68 keys; Large keyboard layout
Display	24 characters x 2 lines
Agency approval	CE; EMC; FCC Class A




## Software and keyboard reference guide

# Using SOLO Studio

Run *SOLO Studio* by selecting *Start > All Programs > SOLO Studio* followed by the printer range you selected during installation, or by clicking on the icon on your desktop.

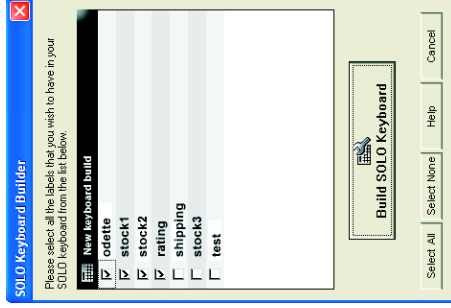
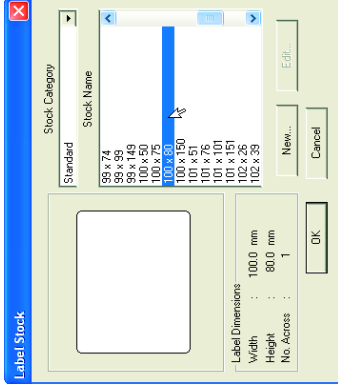
The first time you run *SOLO Studio*, you will be prompted to connect to your *SOLO* keyboard. You may skip this stage if you wish to connect later. This can be done by selecting *Keyboard > Connection Wizard* from the menu at the top of the screen.

## Setting up your labels


You now need to set the label size to match the labels you have loaded into your printer. Click on  or go to *Stock > Select...* Look for a label format matching your label stock, or click on *New* to create a new format. Click on *OK*.

Check your printer's settings under *Settings > Printer...* Ensure the printer model matches the printer you are using. If you have installed a ribbon, ensure *Print Method* is set to *Thermal Transfer*.


You are now ready to design your labels. Use the *Help Topics (Help > Help Topics)* for detailed information relating to the features of *SOLO Studio*.







## Transferring labels to the SOLO keyboard


Your labels can be transferred to the *SOLO* keyboard at any time by selecting *Keyboard > Keyboard Builder* or by clicking on .

The *Keyboard Builder* will show a list of all the labels you have saved on your PC. Tick all the labels you wish to include in your *SOLO* keyboard and click on *Build SOLO Keyboard*.

Ensure that your *SOLO* keyboard is connected to your printer and that the printer is switched on. The keyboard will beep and you will see a welcome message on the keyboard display. Provided your *SOLO* keyboard has had labels transferred to it, pressing any key will take you to a second screen displaying the current date and time. You may return to this point at any stage by pressing .




Press  for the label selection menu. You will see a prompt reading *Select SOLO label:* Scroll through the labels using the  and  keys. Typing a single letter will jump the selection to the first of the labels beginning with that letter. Press  to select. **Note:** The list will contain a file named *AUTO.BAS* which should be ignored.





## Copy and batch quantity

Depending on the label setup, you may be required to enter a *copy* and/or *batch* quantity. *Copy quantity* determines how many identical copies of your label will be printed. If the label contains a batch number such as a serial number, you may be prompted to enter a *batch quantity* which determines how many serialised labels will be printed. Enter the required *copy/batch* quantities and press .

## Data entry

If the label template contains variable data (content that can change on each label), you may be prompted to enter data or make selections.

When presented with a prompt and one of a series of predefined options, you may navigate through these using the  and  keys. Press  to select.

A prompt with no options indicates that the label requires keyboard input. Enter the requested information using the *SOLO* keyboard and press  to confirm your entry. Use the  key to correct any mistyped errors. To enter country-specific characters, press the key below the corresponding symbol printed on the decal in conjunction with the  key. eg. For the £ symbol, hold down  and press **3**.

## Database records

When entering data relating to a record in a database, you may experience a delay depending on the size of the database:

**Note:** Entering *\*.\** will print *all* records of a database.

After printing, you will be returned either to the first prompt or to the *copy/batch* prompt for the label you last selected. To select a different label, press  then .

# Standalone operation